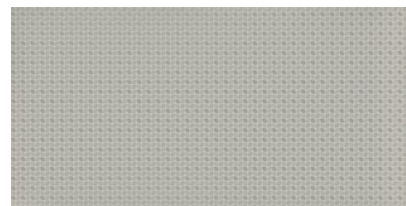


TAPESTRY PUMICE RECT 60X120

REFERENCE	SIZE (cm)	THICKNESS (mm)	GROUP
A037941	60x120	10,40	PC BIA GL



DIMENSIONS AND SURFACE PROPERTIES

Size, thickness, side straightness, flatness, orthogonality UNE-EN 14411 It accomplished all requirements

PHYSICAL PROPERTIES

Water absorption capacity	EN ISO 10545-03	< 0,5%
Flexion resistance	EN ISO 10545-04	=> 35 N/mm ²
Abrasion resistance (glazed Ceramic)	EN ISO10545-07	IV
Thermal shock resistance	EN ISO 10545-09	It stands the test
Cracking resistance	EN ISO 10545-11	It stands the test
Frost resistance	EN ISO 10545-12	It stands the test

CHEMICAL PROPERTIES

Resistance to acids	EN ISO 10545-13	GHB
Resistance to alcalis	EN ISO 10545-13	GHB
Resistance to cleaning products	EN ISO 10545-13	GHB
Resistance to chemical products in swimming pool water	EN ISO 10545-13	GHB
Stains resistance	EN ISO 10545-14	5